

## Synthra C11 Acetate (Catalog No. 011)

The Synthra C11 Acetate module is a completely automated radiosynthesizer for the efficient production of [ $^{11}\text{C}$ ]acetate. The SynthraView software offers both fully automatic as well as manual modes of operation of the Synthra C11 Acetate module.

### Gas Phase Capabilities

- ✓ High specific activities are achieved from in-target produced [ $^{11}\text{C}$ ]CO<sub>2</sub> ranging from 1 Ci/ $\mu\text{mol}$  to 10 Ci/ $\mu\text{mol}$  depending on gas purity.

The [ $^{11}\text{C}$ ]CO<sub>2</sub> produced in target is quantitatively trapped in the stainless steel capillary tubing at -180 °C. Afterwards, it is transferred into the reaction loop oven containing CH<sub>3</sub>MgBr or CH<sub>3</sub>MgCl with a helium flow. [ $^{11}\text{C}$ ]acetate is generated by carboxylation of these Grignard reagents in the loop oven, successively hydrolyzed and purified by SPE cartridges.

### [ $^{11}\text{C}$ ] Labeling Possibilities

- ✓ **[ $^{11}\text{C}$ ]Acetate production:** [ $^{11}\text{C}$ ]Acetate is ready for release after only 12 min starting from trapping the [ $^{11}\text{C}$ ]CO<sub>2</sub>. Under good conditions, the yield is better than 50 %.

### General Features

- ✓ **Heating and cooling capabilities**
  - Two heating zones with cooling capabilities
  - Temperature range: -196 °C – 200 °C
- ✓ **Detectors and controllers**
  - Four shielded radiation detectors
  - Two electronic flow controllers
- ✓ **Chemically inert valves** with small dead volume < 35  $\mu\text{L}$ , 5 bar rated
- ✓ **Dimensions** (w x d x h): 42 x 55 x 41 cm
- ✓ **Weight:** approx. 25 kg

### Synthesis Features

- ✓ **Four reagent vials**
  - Two small (1 – 3 mL) and two large (10 – 15 mL) volume glass vials for reagents

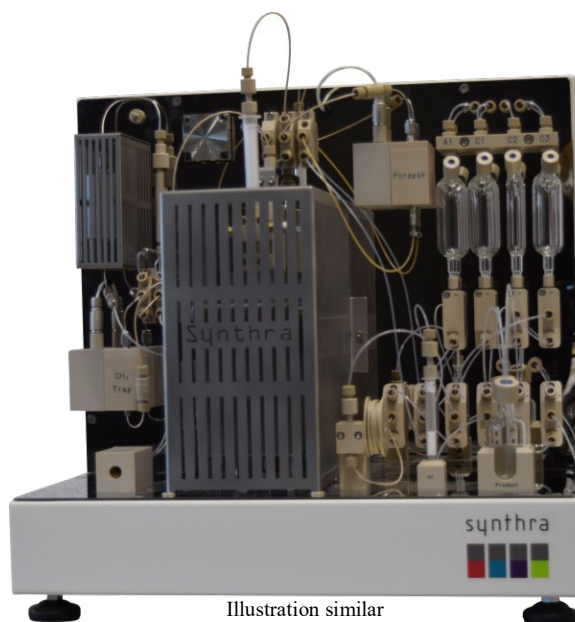


Illustration similar

- ✓ **Two cartridge holders**
- ✓ **SPE unit** for final product formulation

### Additional Synthesis Options

- ➔ **Product solvent evaporator**  
(Catalog No. 000pse)

### GMP Features

- ✓ Synthesis file for [ $^{11}\text{C}$ ]acetate
- ✓ **GMP compliant.** Electronic control and data collection (27/18 channels)
- ✓ **21CFRpart11** & **LIMS** compatible

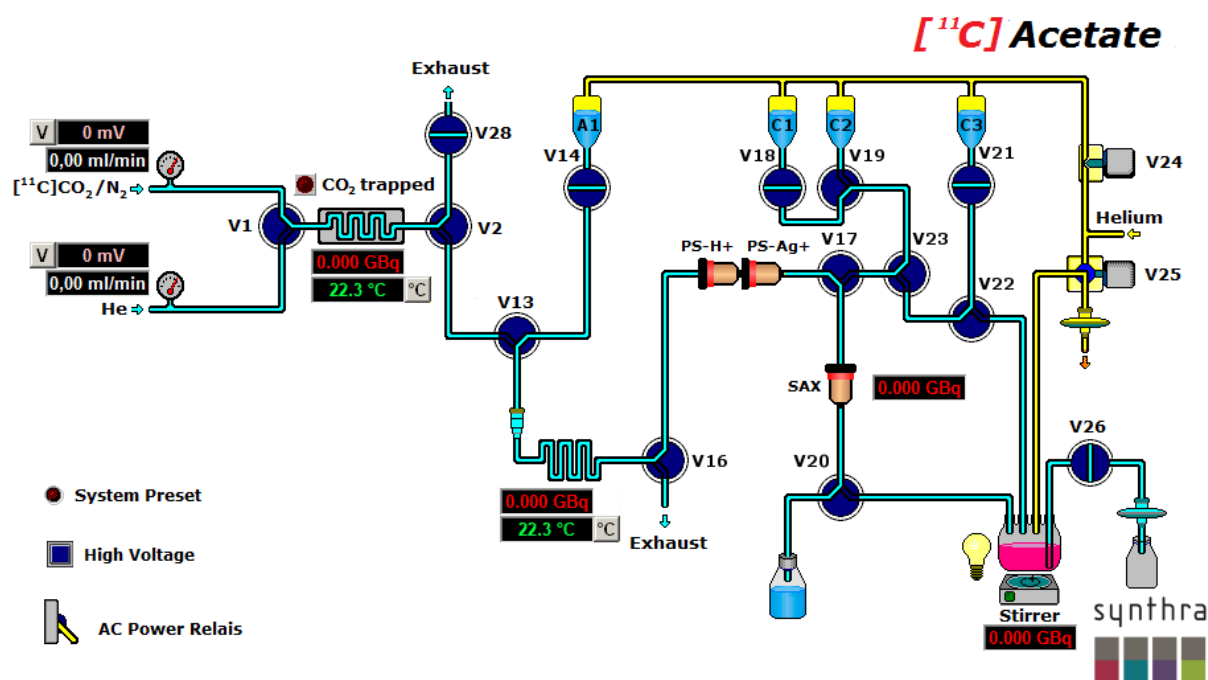
### Terminal Control

- ✓ A laptop (Win 11 Pro) with pre-installed controlling software SynthraView is included
- ✓ Four digital inputs for communication with external devices upon request

# Synthra C-11 Family

## Product Description and Technical Specifications

synthra



The Graphical User Interface (GUI) of the SynthraView software.